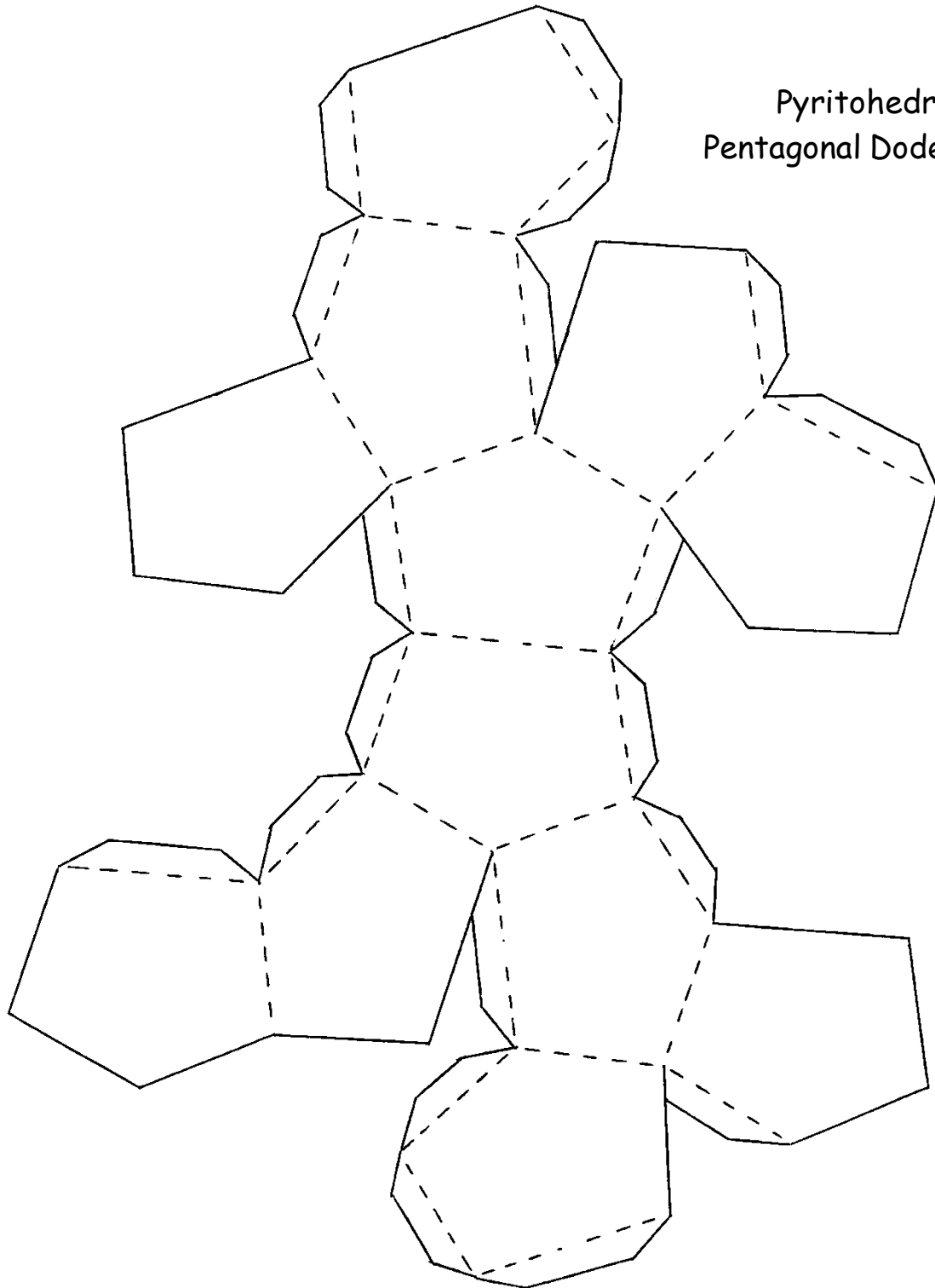




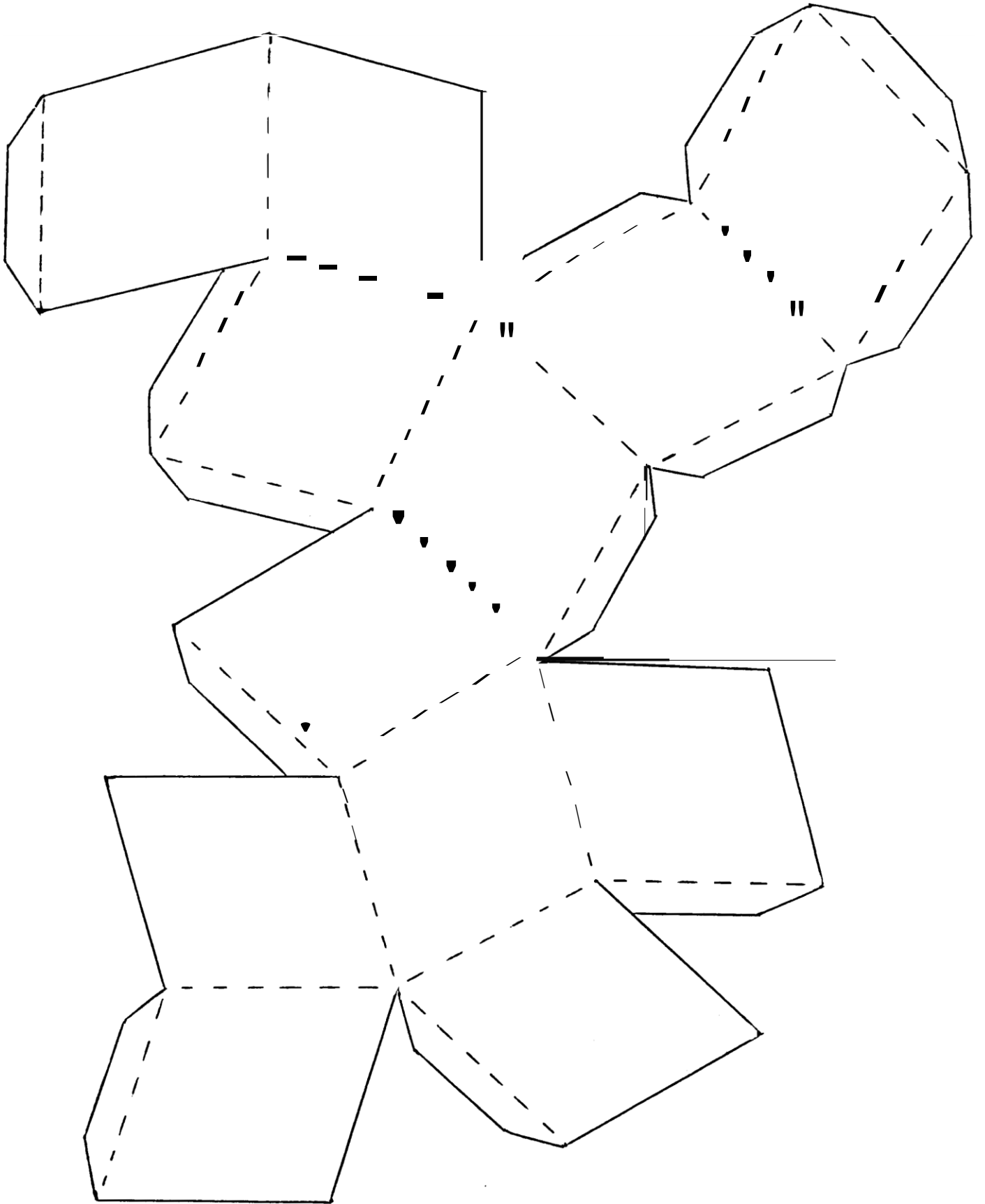
Kid's Corner

Kids, these forms are in the isometric or cubic crystal system. Cut on the solid lines and fold on the dotted lines. Carefully tape the tabs to their opposite faces (tape the tabs on the inside of the model for the best looking results). These work best when copied onto heavier paper. Color or decorate them, attach a ribbon, and hang on your tree as a handmade Christmas ornament.

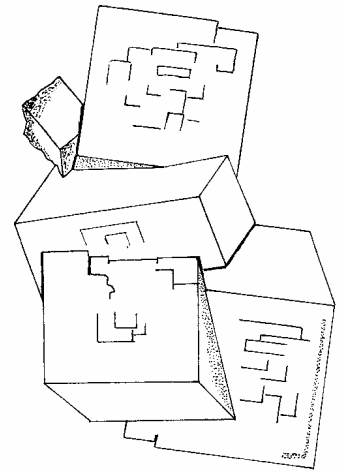
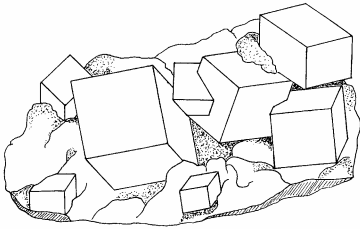
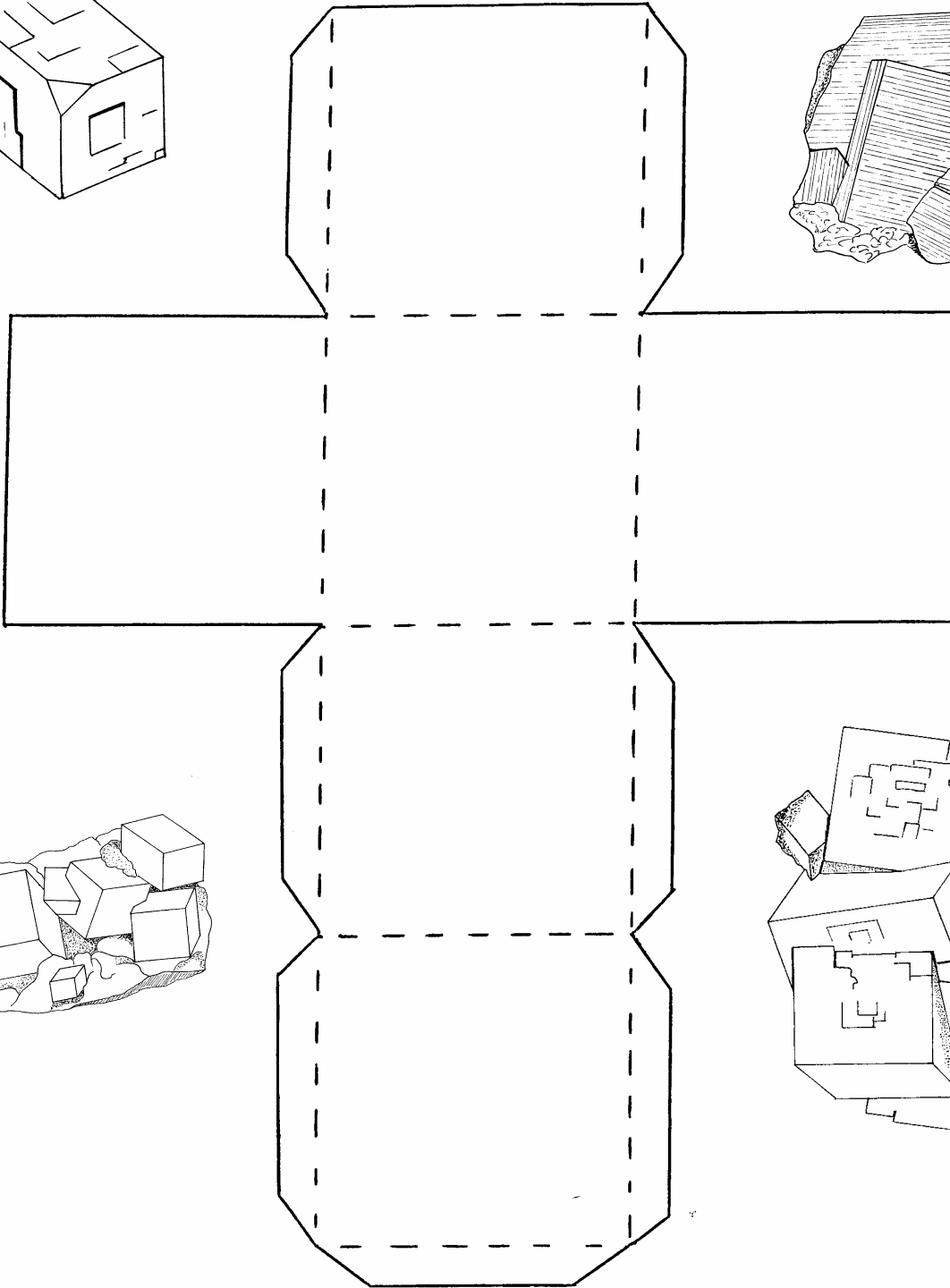
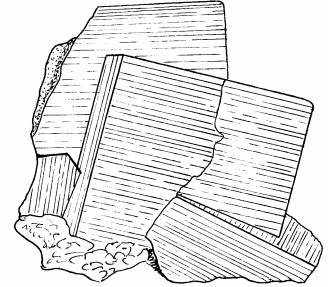
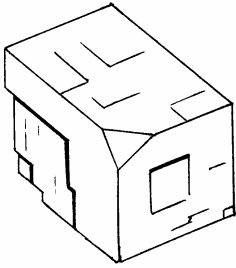


Pyritohedron or
Pentagonal Dodecahedron

Rhombic Dodecahedron



Cube



Octahedron

