

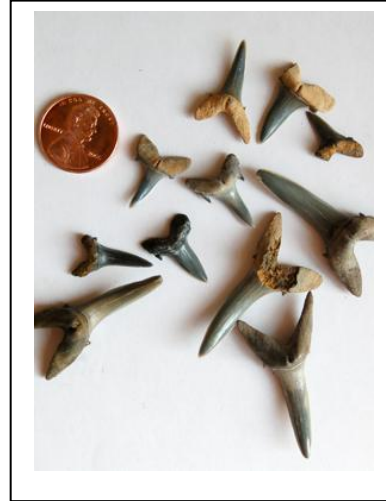


Watch Where You Step!

Here's a few fossils that have been found in Alabama. Keep looking down. You never know what you might find.

Eocene Shark Teeth

Teeth of a sand tiger shark found in Butler County, Alabama, of the Eocene epoch, about 50 million years ago.



Cretaceous Ammonite

A Cretaceous ammonite found in Wilcox County. Ammonites first appeared in the seas 400 million years ago and died out during the Cretaceous-Paleogene mass extinction about 66 million years ago. This specimen dates to approximately 70 million years ago.

Cretaceous Mosasaur Jaw

Lower jawbone of a mosasaur, a giant marine reptile, found in the Alabama Black Belt of the late Cretaceous period, about 80 million years old.





Cretaceous Sea Biscuit

Hardouinia bassleri, also called "sea biscuit," found in Montgomery County, of the Cretaceous period, about 80 million years old.

Sea Bud

Blastoid calyx, commonly called "sea bud," found in north Alabama, of the Mississippian sub-period of the Carboniferous period, about 320 million years old.



Eocene Snail

Snail shells found in Monroe County, Alabama, of the Eocene epoch, about 50 million years old.

Snails in Sandstone

Snails in sandstone found in the Alabama River, of the Eocene epoch, about 50 million years old.

